



# Asphalt Maintainer/Patcher

## 1200B



### 1200B Asphalt Maintainer/Patcher

**Features include:**

- 84.5 HP Kubota Water-cooled, Turbocharged, Totally Encapsulated Engine
- Heavy-duty Hydraulic Towing Tongue
- 100-gallon Tack Distribution System
- 24" Wide Grinder
- 38" to 62" Paving Width
- 28" to 40" Shoulder Attachment
- 2.5-ton Hopper Capacity

Designed with the Paving Professional in Mind.®

# Best in Class

# LeeBoy

## Road Maintenance Versatility

The 1200B Asphalt Maintainer/Patcher is a versatile, multi-purpose road maintenance unit. It features a rotary grinder, paving screed, shoulder-building attachment and tack tank, all in one easy to operate unit.

The 1200B Asphalt Maintainer/Patcher is a cost-effective unit that efficiently utilizes labor and makes a broad range of roadway repairs possible. Its durable design makes it ideal for utility cut and pothole repair, roadway shoulder building, paving, road profiling and road widening.

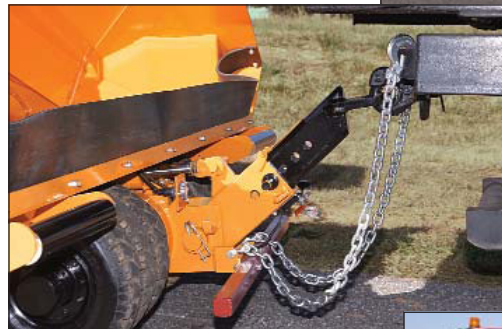
The 1200B features an adjustable, heavy-duty, hydraulic tongue for towing at up to 45 mph. It can be easily connected and disconnected, making movement between jobs quick and efficient.

The shoulder build-up attachment on the 1200B conveys and spreads dirt, sand, gravel or any asphalt material for either widening or building up low shoulders from 28" to 40".

The on-board tack/emulsified liquid asphalt distributor system is standard on the 1200B. It consists of a 100-gallon tank, propane burners, hydraulic-driven pump, a self-winding hose reel and 40 feet of hose with a hand-held spray wand.



**Shoulder Build-up**



**Towing Package**



**Tack/Asphalt Distributor**

## Power Train

### Kubota Water-cooled Diesel Engine

The 1200B Asphalt Maintainer/Patcher features the 84.5 HP Kubota Tier 3, totally encapsulated, diesel engine with safety shutdown features. The water-cooled engine provides optimal power, is fuel efficient, and meets current EPA requirements. The fully enclosed engine housing has adequate engine access and reduces excess noise which allows residential jobs to be completed quietly.





## Rotary Grinder

The rotary grinder on the 1200B raises and lowers hydraulically allowing the operator to grind out areas in need of repair, leaving smooth, straight edges. The ground out material may be used for base or recycling. The 24" wide direct-drive grinder pivots up to 15 degrees from horizontal, making it ideal for refurbishing shallow curbing.



## LeeBoy Traditional Paving Screed



The propane heated paving screed on the 1200B telescopes from 38" to 62" and can be adjusted up to 15 degrees from horizontal. An auger provides even distribution of material and adjustable end gates provide square edges.



Using an underlay pan, the traditional screed is easily modified to pave a narrow strip up to 24" wide.

The 2.5-ton receiving hopper features hydraulic folding wings similar to the LeeBoy 1000 Series Pavers.

## Configuration Checklist

84.5 HP Kubota Water-cooled Tier 3 Engine  
2.5-ton Capacity  
38" to 62" Telescoping Screed  
Rotating Yellow Safety Beacon  
Towing Package  
Two Seats  
24" Wide Grinding Head  
100-gallon Tack Distribution System  
28" to 40" Shoulder Attachment  
Fuel, Oil and Volt Gauge Package  
42" to 72" Telescoping Screed Kit  
Light Package

### 1200B



optional  
optional

# Specifications

## 1200B Asphalt Maintainer/Patcher

ENGINE	
Make	Kubota Tier 3, Stage IIIA, Water-cooled, Turbocharged Diesel Engine, totally encapsulated
Performance	84.5 HP (63 kW) @ 2,600 RPM
DIMENSIONS	
Weight	10,400 lbs. (4,717 kg)
Length	12'10" (3.91 m)
Width	8'6" (2.59 m)
Height	8'6" (2.59 m)
RECEIVING HOPPER	
Capacity	2.5 tons (2,268 kg)
Width	115" (2.92 m) with Hopper Wings open
TRANSMISSION	
	Variable Hydrostatic Front-wheel Drive
ROTARY GRINDER	
Dimensions	24" wide (61 cm) 16" diameter (40 cm)
Hydrostatic Drive	Variable
DISCHARGE CONVEYOR	
Belt Width	16" wide (41 cm)
PAVER	
Screed	38" to 62" (.97 to 1.6 m)
TACK TANK	
Capacity	100 gallons (379 l)
Heat	Propane
Hand Wand	40' Hose (12.2 m)
TIRES	
Front	5.70 x 8.00, 8-ply
Rear	9.00 x 14.5, 12-ply
CAPACITIES	
Fuel	20 gallons (76 l)
Hydraulic Reservoir	39 gallons (148 l)

*LeeBoy makes continuous improvements to all its products and reserves the right to change specifications without notice. Photos and illustrations may contain standard and optional equipment.*

1200B Maintainer 01-2013



Check us out online

www.**LeeBoy**.com

## Other Members of the LeeBoy Family of Products...



3000 Force Feed Loader



RA-400 Spray Patcher



Chip Spreader

